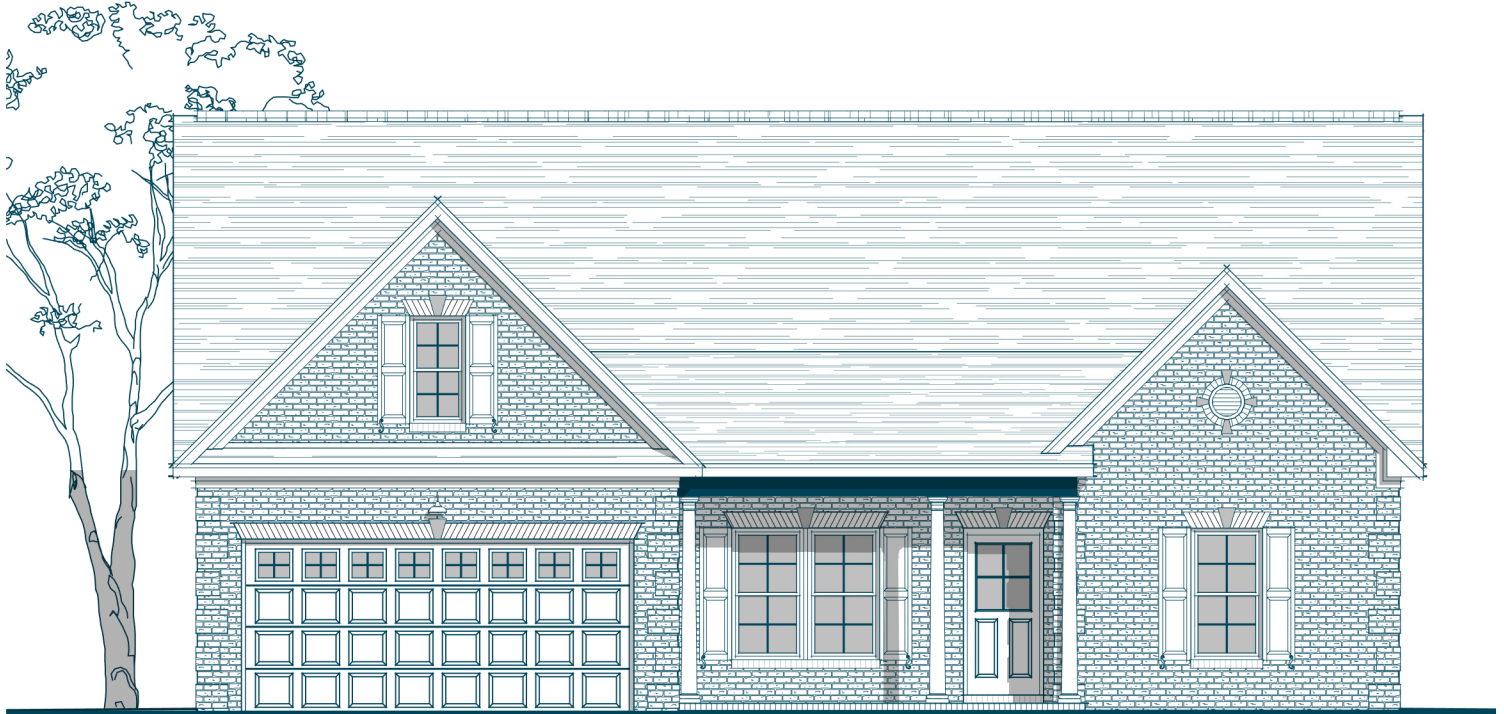


# OXFORD TRADITIONAL



## Specs:

Bedrooms: 3  
Bathrooms: 2  
Square Footage: 2,305 Sq.Ft.  
First Level: 2,305 Sq.Ft.  
Width: 50'-0"  
Depth: 60'-0"

## Options Shown:

- 1 Covered / Screened in Porch
- 2 Covered / Screened in Porch 'B'
- 3 Sunroom (Adds 164 Sq. Ft.)
- 4 3'-0" Wider Garage w/ Two Doors
- 5 2'-0" Garage Extension
- 6 Second Floor Layout (Adds 545 Sq. Ft.) - Requires 4'-0" Garage Extension
- 7 Second Floor Bath
- 8 Owners Bath Layout 'B'
- 9 Bath-2 Double Vanity
- 10 Greatroom Angled Tray Ceiling
- 11 Greatroom Built-in
- 12 Drop Zone Built-in
- 13 Study 15 Lite French Doors

3/19/2018 4:52:55 PM

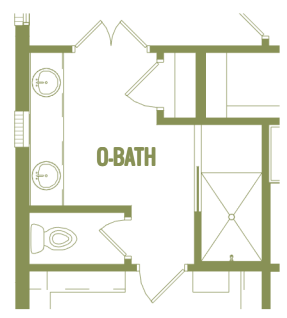
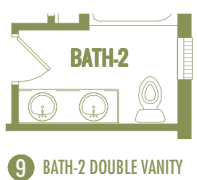
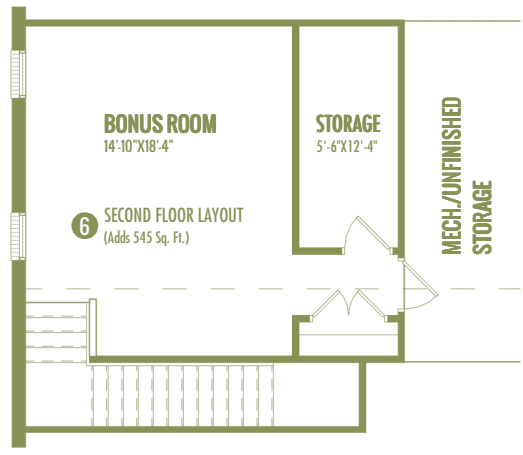
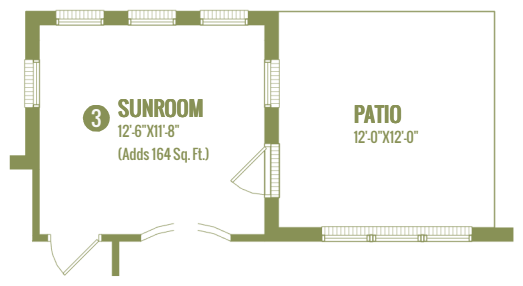
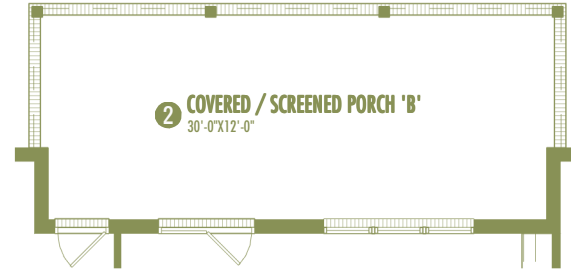
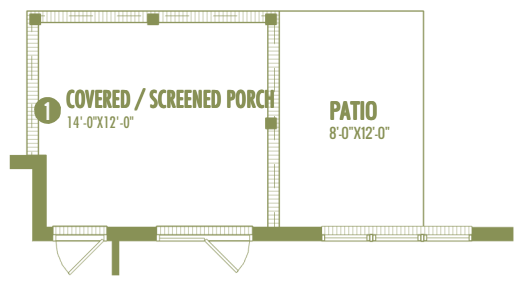


Watercolors, illustrations, and floor plans shown are for marketing purposes only and are subject to change at builder's discretion. Square footage is outside veneer and should be independently verified. This is not a legal document.

3411 HEALY DRIVE, SUITE A, WINSTON-SALEM, NC 27103  
4330 SOUTHPORT SUPPLY ROAD, SUITE 101, SOUTHPORT, NC 28461

336.659.8211  
910.363.1620

ISENHOURHOMES.COM



**OXFORD  
TRADITIONAL**

3411 HEALY DRIVE, SUITE A, WINSTON-SALEM, NC 27103  
4330 SOUTHPORT SUPPLY ROAD, SUITE 101, SOUTHPORT, NC 28461

336.659.8211  
910.363.1620

ISENHOURHOMES.COM

3/19/2018 4:53:40 PM